

Restorative Justice Guide

Overview

The **Restorative Justice Guide** supports jurisdictions in integrating restorative justice practices into their legal systems under the Justice Systems Implementation Framework. Restorative justice emphasizes repairing harm through dialogue, accountability, and community involvement, complementing traditional punitive approaches. Enhanced with process flowcharts, safety protocols, implementation challenge mitigation, and youth-specific protocols, this guide provides principles, practical steps, case studies, and monitoring strategies to ensure equitable, culturally sensitive, and effective programs, as referenced in the [Legal Framework](#) section. It is adaptable to diverse legal traditions and resource levels, fostering inclusive justice systems.

Purpose: To enable jurisdictions to design and implement restorative justice programs that enhance public trust, improve access to justice, and resolve cases efficiently, contributing to the framework's goals of 25% increased public trust, 80% fair access, and 70% case resolution by 2035.

Target Users: National Implementation Units, Regional Justice Hubs, judges, mediators, community leaders, and indigenous justice practitioners.

Format: Modular guide with principles, step-by-step implementation, flowcharts, safety protocols, challenge mitigation, youth protocols, case studies, monitoring metrics, and adaptation guidelines.

Access: Available at [Tools Library](#) in PDF, markdown, and offline formats. Multilingual versions planned by Year 2 (2027).

Instructions

1. **Review Principles:** Understand the core principles of restorative justice to align programs with framework goals.
2. **Assess Context:** Conduct a jurisdictional assessment to identify legal, cultural, and resource factors.
3. **Follow Implementation Steps:** Customize the step-by-step process, using flowcharts to design restorative justice programs.
4. **Apply Safety Protocols:** Implement risk assessments and safety measures, especially for sensitive cases.
5. **Address Challenges:** Use mitigation strategies to overcome common implementation obstacles.
6. **Adapt for Youth:** Apply youth-specific protocols for age-appropriate practices.
7. **Leverage Case Studies:** Adapt best practices to local contexts.
8. **Monitor and Evaluate:** Track progress using provided metrics, integrating results into the framework's metrics dashboard ([Monitoring and Accountability](#)).
9. **Adapt as Needed:** Modify up to 20% of content (e.g., add indigenous practices) with Regional Justice Hub approval ([Appendices](#)).
10. **Seek Support:** Submit plans to Regional Justice Hubs for funding, training, or technical assistance via [globalgovernanceframework@gmail.com].

Restorative Justice Principles

Restorative justice is grounded in the following principles, aligned with the framework's commitment to universal access, cultural sensitivity, and transparency:

- **Victim-Centered:** Prioritize victims' needs, ensuring opportunities for dialogue, restitution, and healing.
- **Offender Accountability:** Encourage offenders to take responsibility through apologies, reparations, or community service.
- **Community Involvement:** Engage communities in resolving disputes, fostering social cohesion.
- **Inclusivity:** Ensure participation of marginalized groups (e.g., indigenous, youth), targeting ≥50% representation by Year 3 (2028).
- **Cultural Sensitivity:** Respect local traditions, integrating indigenous practices where appropriate.
- **Voluntary Participation:** Require informed consent, with opt-out options and no coercion.
- **Restorative Outcomes:** Focus on repairing harm (e.g., restitution, reconciliation), targeting 70% participant satisfaction by Year 4 (2029).
- **Safety:** Prioritize participant safety, especially in cases involving power imbalances or trauma.

Implementation Steps

Follow these steps to design and launch restorative justice programs, customizable to local contexts.

Step 1: Conduct a Jurisdictional Assessment

- **Objective:** Identify legal, cultural, and resource factors to tailor programs.
- **Actions:**
 - Review legal frameworks for compatibility ([Legal Framework](#)).
 - Map community and indigenous justice practices using the [Stakeholder Engagement Charter Template](#).
 - Assess resources (e.g., mediators, funding) via the [Pilot Readiness Self-Assessment Tool](#).
 - Consult stakeholders, targeting 50% marginalized group input.
- **Output:** Assessment report summarizing legal gaps, cultural opportunities, and resource needs.
- **Timeline:** 1–2 months.

Step 2: Develop Legal and Policy Framework

- **Objective:** Establish legal and policy foundations.
- **Actions:**
 - Draft legislation to authorize restorative justice for specific cases (e.g., minor offenses, juvenile cases).
 - Create guidelines defining eligible cases, participant rights, and restorative outcomes.
 - Integrate indigenous justice models, targeting 30% of programs incorporating customary practices by Year 3 (2028).
 - Secure approval from National Implementation Units and Regional Justice Hubs.
- **Output:** Restorative justice policy document and legal amendments.
- **Timeline:** 3–6 months.

Step 3: Build Capacity

- **Objective:** Train personnel and secure resources.
- **Actions:**
 - Train mediators (target: 100 per jurisdiction by Year 2) using framework curricula ([Implementation Mechanisms](#)).

- Recruit community volunteers, prioritizing marginalized groups, targeting 50% representation.
- Secure funding (e.g., \$50,000 per pilot) from the global justice fund or local budgets.
- Establish restorative justice centers or mobile units, ensuring accessibility.
- **Output:** Trained personnel, funded programs, and operational centers.
- **Timeline:** 6–12 months.

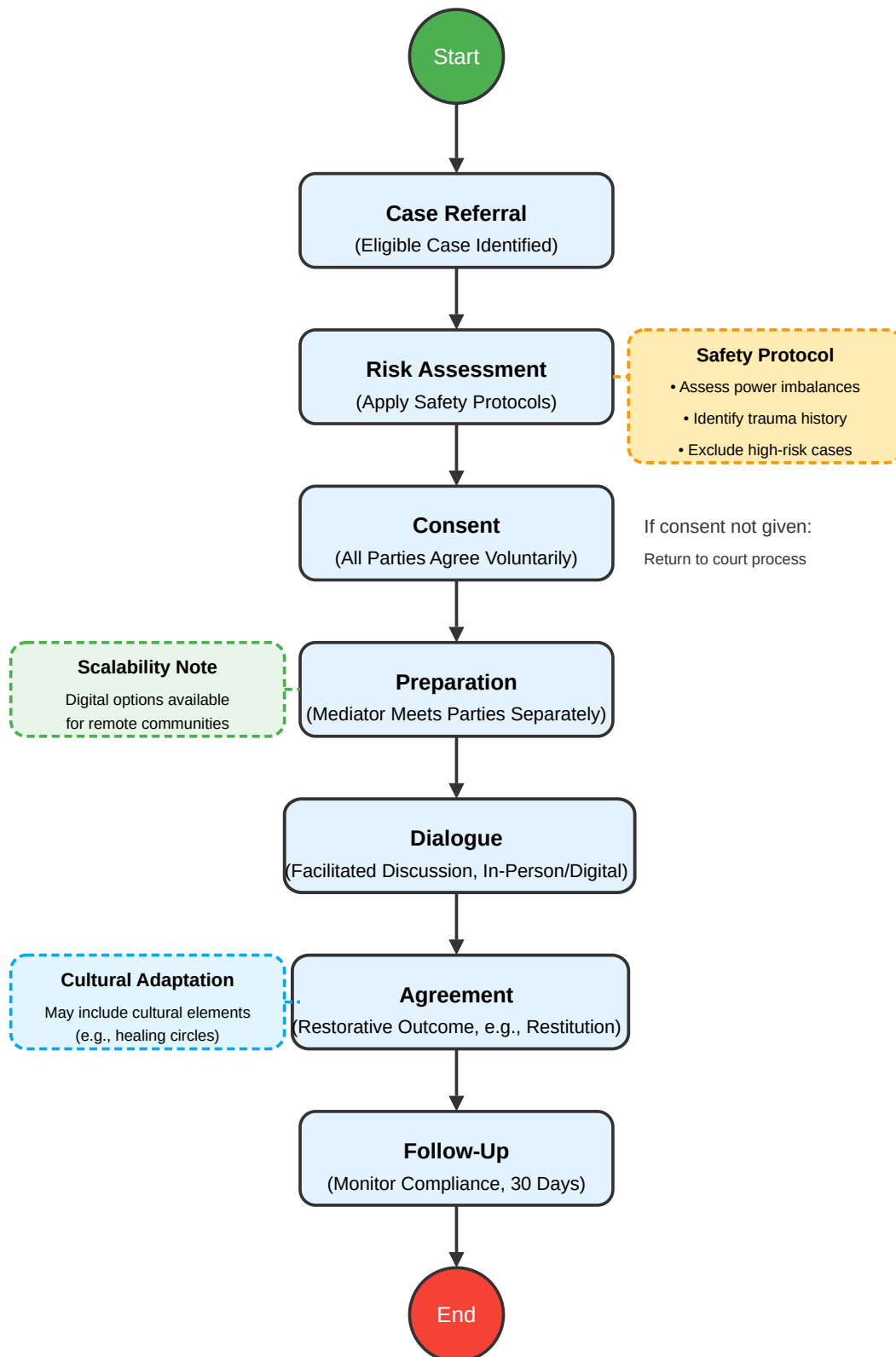
Step 4: Design Restorative Justice Processes

- **Objective:** Create structured processes with safety protocols and youth considerations.
- **Actions:**
 - Develop mediation protocols (e.g., victim-offender dialogues, community circles) using flowcharts below.
 - Define eligible case types (e.g., property disputes, minor assaults) based on assessment.
 - Apply safety protocols (see Safety Protocols section) for sensitive cases.
 - Incorporate youth-specific protocols (see Youth-Specific Protocols section) for age-appropriate practices.
 - Ensure accessibility through in-person, digital, or hybrid formats, targeting 80% coverage by Year 4 (2029).
 - Provide low-tech options (e.g., paper-based agreements) for low-resource areas.
- **Output:** Restorative justice process manual, available in local languages.
- **Timeline:** 2–4 months.

Process Flowcharts:

Victim-Offender Dialogue Process

Justice Systems Implementation Framework

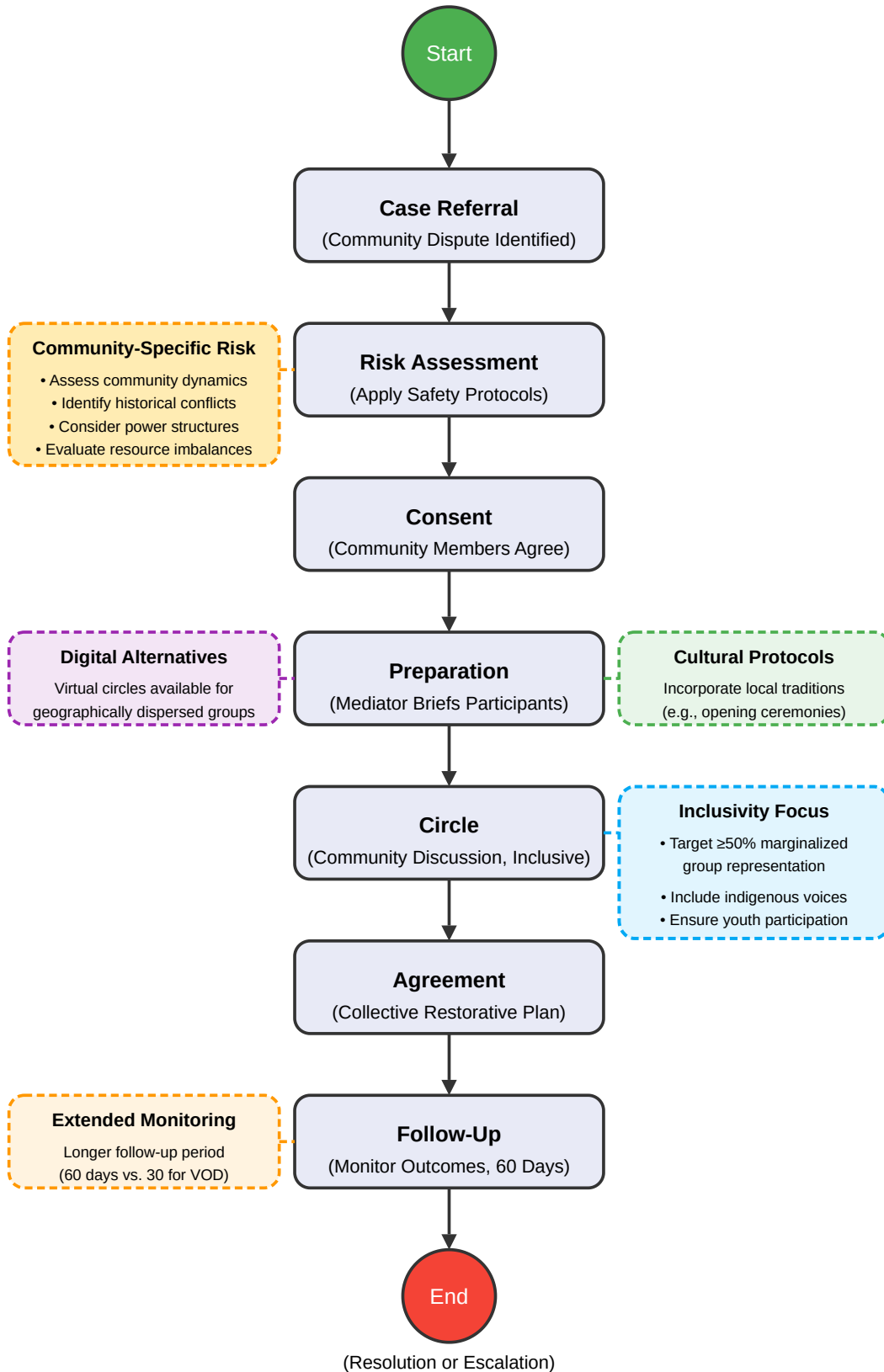


(Case Resolved or Referred to Courts)

© Justice Systems Implementation Framework

Community Circle Process

Justice Systems Implementation Framework



(Resolution or Escalation)

© Justice Systems Implementation Framework

- Instructions:** Use flowcharts to train mediators and guide stakeholders.

Step 5: Pilot and Scale Programs

- **Objective:** Launch pilots and expand based on success.
- **Actions:**
 - Select pilot sites based on readiness (e.g., high governance scores).
 - Implement pilots, targeting 500 cases resolved restoratively by Year 3 (2028).
 - Collect feedback, aiming for 70% satisfaction.
 - Scale programs to additional regions, targeting 50% jurisdictional coverage by Year 6 (2031).
- **Output:** Pilot reports and scaling plan.
- **Timeline:** 12–24 months for pilots; ongoing for scaling.

Step 6: Monitor and Evaluate

- **Objective:** Assess impact and ensure improvement.
- **Actions:**
 - Track metrics (see Monitoring and Evaluation section).
 - Conduct biannual reviews, targeting 85% stakeholder satisfaction by Year 4.
 - Publish outcomes publicly, respecting confidentiality.
 - Share best practices via the knowledge management system ([Implementation Mechanisms](#)).
- **Output:** Evaluation reports and updated guidelines.
- **Timeline:** Ongoing, with biannual reporting.

Safety Protocols

Ensure participant safety, especially in sensitive cases involving power imbalances (e.g., gender-based violence) or traumatized individuals.

- **Risk Assessment:**
 - Conduct pre-mediation assessments to identify risks (e.g., power imbalances, trauma history), using a standardized checklist (available at [Tools Library](#)).
 - Involve trained mediators to evaluate case suitability, excluding high-risk cases (e.g., severe violence) from restorative processes.
 - Consult victims and community leaders, ensuring 100% victim consent for participation.
- **Safety Measures:**
 - Provide separate pre-mediation meetings for victims and offenders to ensure comfort and consent.
 - Offer neutral venues or secure digital platforms (e.g., encrypted video calls) for dialogues, targeting 90% accessibility by Year 3 (2028).
 - Assign trauma-informed mediators (target: 50% trained by Year 2) to handle sensitive cases.
 - Establish safety plans (e.g., exit strategies, support contacts) for participants, reviewed before each session.
- **Support Services:**
 - Link participants to counseling or legal aid, ensuring availability for 80% of cases by Year 3.
 - Provide post-mediation follow-up (e.g., check-ins within 7 days) to monitor emotional and physical safety.
- **Escalation Protocols:**
 - Halt processes if safety concerns arise, referring cases to traditional courts or Regional Justice Hubs within 24 hours.

- Document incidents confidentially, reporting anonymized trends quarterly to improve protocols.

Adaptation Note: Customize protocols for local contexts (e.g., incorporate community-based safety practices), with Regional Justice Hub approval.

Implementation Challenges and Mitigation

Address common obstacles to ensure successful restorative justice programs.

- **Challenge: Resistance from Traditional Legal Actors** (e.g., judges, prosecutors wary of non-punitive approaches)
 - **Mitigation:**
 - Conduct awareness campaigns, targeting 80% legal actor participation in workshops by Year 2 (2027).
 - Showcase case study successes (e.g., reduced court backlogs) via the knowledge management system.
 - Involve legal actors in program design, ensuring 30% representation in planning committees.
- **Challenge: Resource Constraints** (e.g., limited funding, trained mediators)
 - **Mitigation:**
 - Secure funding from the global justice fund, targeting \$100,000 per jurisdiction by Year 3.
 - Train community volunteers as mediators, leveraging low-cost peer models, targeting 200 volunteers by Year 4.
 - Use mobile units and digital platforms to reduce infrastructure costs, achieving 70% coverage by Year 3.
- **Challenge: Cultural Misalignment** (e.g., restorative practices conflicting with punitive traditions)
 - **Mitigation:**
 - Engage cultural leaders early, integrating customary practices (e.g., tribal mediation) into 40% of programs by Year 3.
 - Conduct community dialogues to build acceptance, targeting 60% community support by Year 2.
 - Pilot in culturally receptive areas first, using results to advocate broader adoption.
- **Challenge: Low Stakeholder Trust** (e.g., skepticism about fairness)
 - **Mitigation:**
 - Ensure transparency by publishing program outcomes quarterly, respecting confidentiality.
 - Prioritize marginalized group inclusion, targeting 50% representation in processes.
 - Use the [Stakeholder Engagement Charter Template](#) to build inclusive engagement plans.

Adaptation Note: Add jurisdiction-specific challenges (e.g., urban-rural divides) and mitigation strategies, documenting for transparency.

Youth-Specific Protocols

Design restorative justice processes tailored for youth (e.g., juvenile offenders, young victims) to ensure age-appropriate and effective interventions.

- **Eligibility Criteria:**

- Focus on minor offenses (e.g., vandalism, petty theft) involving youth aged 12–18, excluding violent crimes.
- Require parental or guardian consent for participants under 16, ensuring 100% compliance.
- **Process Design:**
 - Use youth-friendly formats (e.g., peer-led circles, informal settings), targeting 80% youth satisfaction by Year 3 (2028).
 - Incorporate digital platforms (e.g., secure chat-based mediation) for accessibility, reaching 70% of urban youth.
 - Limit session durations to 1–2 hours to accommodate attention spans and school schedules.
- **Mediator Training:**
 - Train mediators in youth psychology and trauma-informed practices, targeting 50% trained by Year 2.
 - Include youth peer mediators (aged 16–18), aiming for 30% peer-led sessions by Year 4 (2029).
- **Restorative Outcomes:**
 - Prioritize skill-building outcomes (e.g., community service, vocational training) over punitive measures, targeting 60% youth engagement in programs by Year 3.
 - Facilitate mentorship opportunities, linking youth to community role models, with 50% of cases including mentorship by Year 4.
- **Safety and Support:**
 - Conduct youth-specific risk assessments, focusing on emotional safety and peer dynamics, using checklists from [Tools Library](#).
 - Provide access to youth counselors, ensuring availability for 80% of cases by Year 3.
 - Monitor post-mediation well-being through school or community check-ins, targeting 90% follow-up within 14 days.

Adaptation Note: Adjust protocols for local youth demographics (e.g., urban vs. rural) or cultural norms, ensuring alignment with framework principles.

Case Studies

Examples of successful restorative justice programs, adaptable to local contexts.

Case Study 1: Indigenous Restorative Justice in [Region]

- **Context:** A rural jurisdiction integrated tribal councils into restorative justice for property disputes.
- **Approach:**
 - Trained 20 indigenous elders as mediators, using customary storytelling.
 - Used community circles, achieving 80% resolution within 30 days.
 - Secured \$30,000 from the global justice fund for mobile units.
- **Outcomes:** 90% participant satisfaction, 25% reduction in court backlogs.
- **Lessons:** Engage indigenous leaders, adapt to cultural norms, prioritize mobile units.
- **Adaptation:** Apply to jurisdictions with indigenous populations.

Case Study 2: Urban Youth Restorative Program in [City]

- **Context:** An urban jurisdiction addressed juvenile delinquency with restorative justice.
- **Approach:**

- Trained 15 peer mediators (50% female) in youth-specific protocols.
- Used digital platforms for virtual dialogues, reaching 70% of eligible youth.
- Offered community service, reducing recidivism by 20%.
- **Outcomes:** 75% case resolution, 60% youth reporting improved trust.
- **Lessons:** Leverage youth-led initiatives, use digital tools, link outcomes to skill-building.
- **Adaptation:** Suitable for urban youth populations.

Monitoring and Evaluation

Track metrics to assess program effectiveness, integrating into the framework's metrics dashboard.

Metric	Target	Measurement Method	Frequency
Case Resolution Rate	70% of eligible cases resolved by Year 4 (2029)	Case records	Quarterly
Participant Satisfaction	70% satisfaction among victims, offenders, communities	Surveys, interviews	Biannually
Marginalized Group Participation	≥50% from marginalized groups by Year 3 (2028)	Participant demographics	Biannually
Recidivism Reduction	20% reduction for restorative cases by Year 5 (2030)	Court and police data	Annually
Public Trust	25% increase in trust by Year 6 (2031)	Public perception surveys	Annually

Integration: Metrics feed into the centralized dashboard ([Monitoring and Accountability](#)).

Adaptation Note: Customize metrics (up to 20%) for local priorities (e.g., youth engagement rates).

Customization Guidelines

- **Adaptation:** Modify up to 20% of content (e.g., integrate customary practices) with Regional Justice Hub approval.
- **Examples:**
 - Add religious mediation for faith-based communities.
 - Adjust metrics for rural accessibility.
 - Include indigenous practices (e.g., healing circles).
- **Documentation:** Record adaptations in an annex for transparency.

Implementation and Support

- **Launch:** Convene a stakeholder meeting to finalize the plan by [date, e.g., Q2 2026].
- **Submit:** Share plans and reports with Regional Justice Hubs ([Tools Library](#)).
- **Request Assistance:** Contact [globalgovernanceframework@gmail.com] for training, funding, or support.
- **Feedback:** Submit guide usability feedback for biannual updates (July and January).

Monitoring Progress

- **Review Cycles:** Evaluate biannually, revising based on feedback and metrics.
- **Reporting:** Integrate outcomes into quarterly dashboard updates ([Monitoring and Accountability](#)).
- **Success Metrics:** Achieve 70% case resolution and 25% increased public trust by Year 6 (2031).